



Thermo Scientific 253 Plus
10 kV Isotope Ratio MS

Utilize the Gold Standard in isotope ratio MS

- Robustness
- Sensitivity
- Precision

Thermo
SCIENTIFIC

Utilize the Gold Standard in Isotope Ratio MS





The Thermo Scientific™ 253 Plus™ 10 kV IRMS is the gold standard in high performance stable isotope ratio mass spectrometry (IRMS). It builds on the robustness, linearity, and sensitivity only available in the Thermo Scientific 10 kV IRMS technology.

- ROBUSTNESS
- SENSITIVITY
- PRECISION

Key Features of the 253 Plus 10kV IRMS

- 10 kV acceleration voltage for highest sensitivity
- “Extra bright” ion source combining highest sensitivity and linearity
- Variable ion source conductance (VISC) for enhanced pumping of “sticky” gases
- All-metal sealed analyzer with gold gaskets for ultra high vacuum
- Differential pumping for lowest analyzer backgrounds
- Monolithic ion optical bench for highest ion beam stability
- Mass range m/z 1-150 at full 10 kV acceleration voltage
- Mass resolution > 200 with a Mass Resolving Power > 900 ($m/\Delta m$)
- Up to 12 Faraday cups
- Unique shielded “clumped isotope” collector design for lowest baseline contribution
- Removal of scattered ions for high precision measurement of all minor isotopes
- 10^{13} ohm amplifiers for smallest signals with best signal/noise
- Analytical dynamic range $>10^7$
- Fast amplifiers with low noise technology
- Computer switchable amplifier gains
- Dedicated hydrogen collector for dual inlet and continuous flow applications
- Unique energy filter built into the m/z 3 cup for interference-free continuous flow HD applications

Robustness

More than 500 Thermo Scientific 10 kV IRMS systems build the proven basis of outstanding performance over the past decades. The 253 Plus 10 kV IRMS extends this performance by new features and functionalities improving sample utilization, stability, background and signal-to-noise resulting in ultimate precision on smallest sample sizes.

“Extra Bright” Ion Source

The “extra bright” electron impact ion source with 10 kV acceleration voltage delivers the highest sensitivity in IRMS while giving the tightest and most comprehensive performance for linearity and stability. Illumination of the whole ion source region ensures that all gas wetted surfaces are heated, which results in lowest backgrounds.

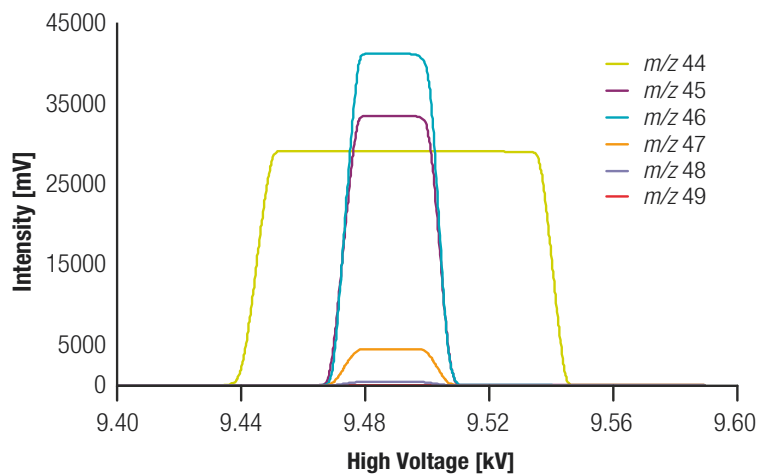
The unique variable ion source conductance window (VISC) allows the ion source conductance to be optimized for applications requiring faster pumping of the ion source, to avoid accumulation of sticky gases and reduce ion-molecule reactions. The electro-polished monolithic ion source manifold is machined from a single piece of stainless steel and is weld-free and all-metal sealed, a prerequisite for achieving the lowest backgrounds and least memory effects. The ion source is pumped with a hybrid two-stage turbo molecular pump, giving high pumping capacity for H₂ and helium, while guaranteeing lowest backgrounds and a low and stable H₃⁺ factor.

The Thermo Scientific 253 Plus 10 kV Isotope Ratio Mass Spectrometer delivers the highest precision for the determination of D/H, ¹³C/¹²C, ¹⁵N/¹⁴N, ¹⁸O/¹⁶O, ³⁴S/³²S (from SO₂ and SF₆), ²⁸Si/²⁹Si as well as Ar, Kr and Xe isotope ratios.

Compact 10 kV Analyzer

The compact 10 kV design of the 253 Plus 10 kV IRMS with its complete analyzer on one monolithic metal cast plate guarantees outstanding long term stability and robustness. The analyzer geometry with stigmatic focusing and a constant mass dispersion of 460 mm is the foundation of the 253 Plus 10 kV IRMS analytical performance and robustness. The magnetic sector field is generated by a uniquely shaped electromagnet. The field strength is controlled by a high precision current regulator, which is under full data system control. Perfect peak shapes and unrivaled mass resolving power over the whole focal plane plus a mass range, which covers all stable isotope ratio applications, translate directly into sensitivity, precision, stability and robustness.

The analyzer can be equipped with an optional differential pumping module, ensuring optimal vacuum conditions even with a high He load in the ion source, which allows highest continuous flow transfer and sensitivity.



Sharp, flat top CO₂ peak shapes.
Monitoring cup at *m/z* 47.5.

Enhanced Focussing Magnet

Unmatched peak stability

The special shaping of the magnet pole pieces guarantees sharp peak shapes and isotope ratio stability over the whole deflection range. The outstanding long-term peak stability supports very long integration times and highest precision on smallest signal intensities.

- Excellent isotope ratio stability resulting from outstanding peak shapes
- Superb flat peak tops over the whole simultaneous mass range
- Enhanced resolving power for best isotope ratio stability with steep sides contributing to the improved abundance sensitivity

The 253 Plus 10 kV IRMS provides a flexible and open platform for the connection of any custom inlet systems and preparation devices.



Precision

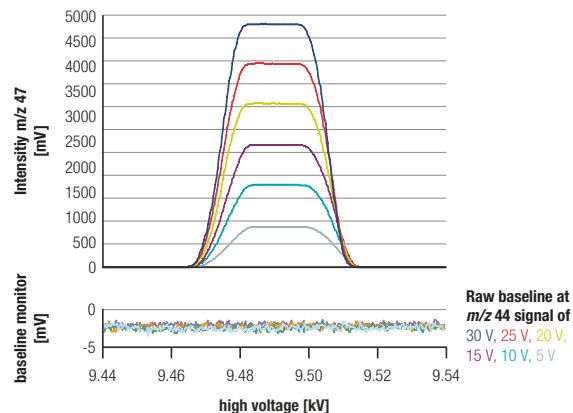
The 253 Plus 10 kV IRMS is unique in its capability to achieve high precision measurements from the smallest amounts of sample and smallest ion beams even from complex isotopologue systems while providing the widest dynamic range in class. The new features of the 253 Plus 10 kV IRMS address all requirements for clumped isotope analysis making it the most powerful tool in isotope ratio MS.

Individually Shielded Collectors

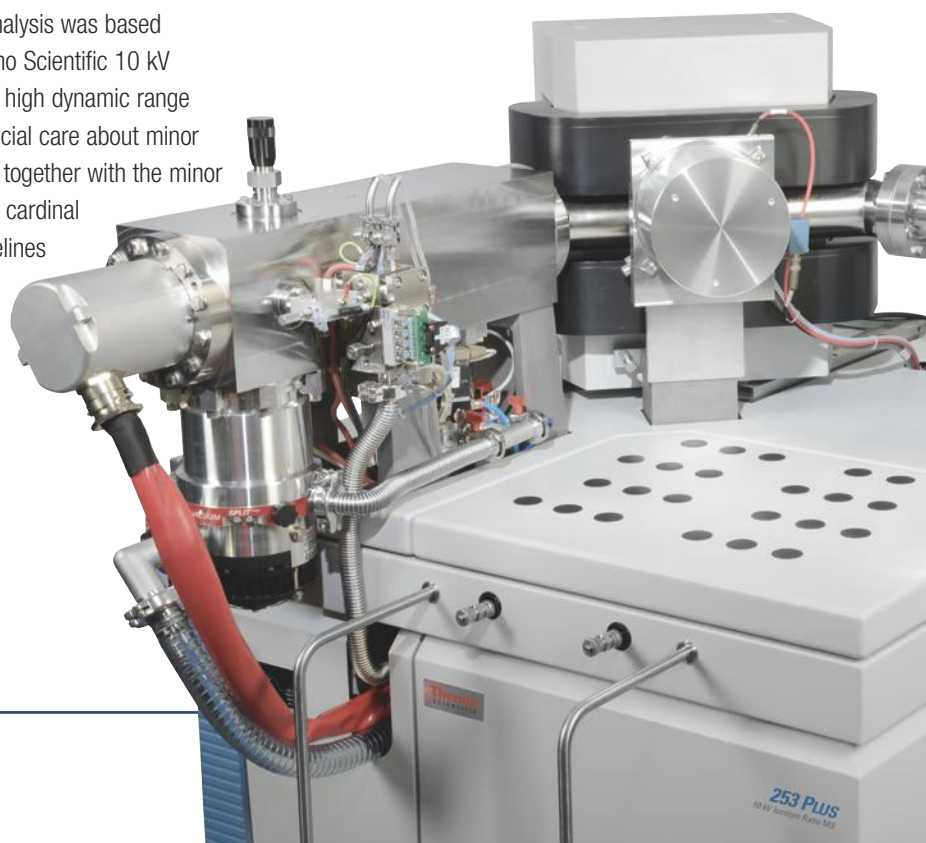
Collectors for C, N, O, S, Si, Ar, Kr, and Xe are located at the focal plane of the full deflection radius. They use deep, individually shielded Faraday cups with secondary electron suppression. Signals from up to eight individual cups can be acquired simultaneously, depending on the applications.

H₂ and HD are measured on the small radius of the magnet with a dedicated collector system with an integrated energy filter removing all low energy He ions from the mass 3 signal. This ensures unsurpassed high performance for D/H analysis by continuous flow applications, especially in GC-IRMS, in which smallest samples are required.

The development of clumped isotope analysis was based on the design and features of the Thermo Scientific 10 kV technology. Very small ion beams and a high dynamic range of the isotopologue systems require special care about minor secondary effects that can be amplified together with the minor ion beams. Few scattered ions from the cardinal mass can result in depletion of the baselines on the minor ion beams. The new 253 Plus 10 kV IRMS collector design takes care of these requirements.



Baseline monitoring of clumped CO₂



Collector configurations for challenging isotopologue systems including 10^{13} ohm Amplifier Technology

Clumped CO₂ Isotopes

¹²C¹⁶O¹⁶O ¹³C¹⁶O¹⁶O ¹²C¹⁸O¹⁶O ¹³C¹⁸O¹⁶O baseline control ¹²C¹⁸O¹⁸O ¹³C¹⁸O¹⁸O

Triple and Clumped Oxygen

¹⁶O¹⁶O ¹⁶O¹⁷O ¹⁶O¹⁸O ¹⁷O¹⁸O ¹⁸O¹⁸O

N₂O Isotopomers

¹⁴N¹⁶O ¹⁵N¹⁶O and ¹⁴N¹⁴N¹⁶O ¹⁴N¹⁵N¹⁶O ¹⁴N¹⁴N¹⁸O

Isotopes of Noble Gases

³⁶Ar ³⁸Ar ⁴⁰Ar

¹²⁴Xe ¹²⁶Xe ¹²⁸Xe ¹²⁹Xe ¹³⁰Xe ¹³²Xe ¹³⁴Xe

Rare Sulfur Isotopes

³²S¹⁹F₅ ³³S¹⁹F₅ ³⁴S¹⁹F₅ ³⁶S¹⁹F₅

■ Boosted by 10^{13} ohm Amplifier Technology

Shielded Clumped Isotope Collectors

Breakthrough in baseline contribution and baseline control

The unique shielded clumped isotope collector design is the breakthrough for accurate clumped isotope ratio measurements.

- Lowest scattered ion baseline for all minor isotopes - even at maximum ion source load
- Simultaneous baseline monitoring using half mass detector positions
- Uncompromised linearity and stability for all clumped isotope measurements



Unique Clumped Isotope Collector Design

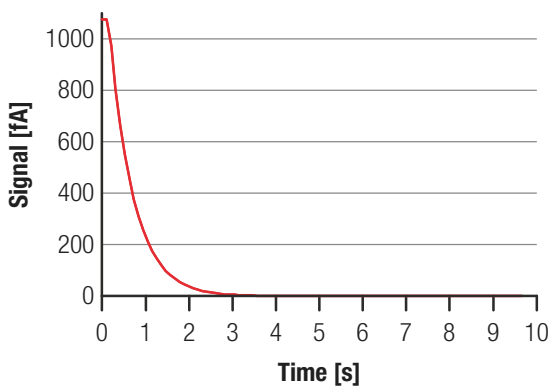
The unique shielded clumped isotope collector design takes care of any effects from the cardinal mass (e.g. m/z 44 for CO₂), for all minor isotopes, (m/z 45 – m/z 49 for CO₂), in any isotopologue system. The collector array can also be equipped with baseline monitoring Faraday cups for monitoring baseline stability and, if required, be used to make corrections by the Thermo Scientific™ Isodat™ Software Suite. This ensures uncompromised linearity and stability for all clumped isotope systems resulting in highest precision results.

Sensitivity

The Thermo Scientific 10^{13} ohm Amplifier Technology extends the linearity and stability of Faraday cups towards the sensitivity of secondary electron multipliers. The new technology provides improved signal to noise ratio on small ion beams by amplifying the signal by a factor of 10 while the Johnson noise is only amplified by the $\sqrt{10}$. Hence, very small ion beams can now be analyzed with a factor 3 better signal to noise ratio.

Low Noise Amplifiers

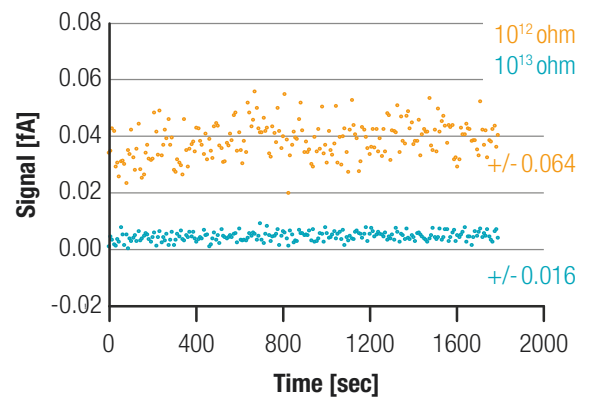
The unmatched dynamic range of the 253 Plus 10 kV IRMS extends high precision isotope analysis into clumped isotope, triple isotope and isotopomer applications. The amplifiers cover a dynamic range of $> 10^7$ with resistors up to 10^{13} ohm. All amplifiers are located in an evacuated housing ensuring lowest background noise and highest stability. Each amplifier has a linear dynamic range of > 500 and direct low noise connection. Fully software controlled switching allows to change gains together with the experiments.



Fast decay of the 10^{13} ohm amplifier

Each Faraday cup is individually connected to an amplifier. The new amplifier design ensures highest stability, fast decay times and lowest noise. Even the 10^{13} ohm resistors show excellent decay times while providing a 10 times higher gain than any other IRMS.

The 253 Plus 10 kV IRMS delivers the broadest range of high-level research applications providing highest Continuous Flow and Dual Inlet sensitivity.



Heavily reduced signal to noise with 10^{13} ohm amplifier

Full Automation for Smallest Carbonate Samples

The Thermo Scientific™ KIEL IV Carbonate Device provides fully automated long term performance at ultimate isotope precision and can be combined with clumped isotope analyses on low abundance isotopologue signals. High sample throughput with more than 10,000 carbonate samples per year is giving excellent results even below 10 µg. The KIEL IV Carbonate Device uses the principle of the individual acid bath in septum-free vials for each sample. Storage, transfer and chemical reaction of phosphoric acid at elevated temperatures operate under full temperature control in a unique temperature controlled cabinet. Highest throughput is ensured by two independent reaction lines with unique inert, low dead volume acid dosing valves. Laboratories show routine operation with up to 15,000 analyses per year with the only consumable being LN2. The open access to the Isodat Software Suite provides total process control and data log file for complete insight to all preparation and measurement processes at any time.

Highest Sensitivity in GC-IRMS

The Thermo Scientific™ GC Isolink II™ GC-IRMS utilizes the high sensitivity and unmatched isotope ratio linearity of the 253 Plus 10 kV IRMS providing best in class compound specific isotope ratio results. The unique conversion technologies allow analyzing C, N, O and H isotope ratios in a fully automated way.



10¹³ ohm Amplifier Technology

Leading edge technology

The new amplifier technology extends the dynamic range in IRMS with 10¹³ ohm resistors, faster decay times and reduced electronic noise.

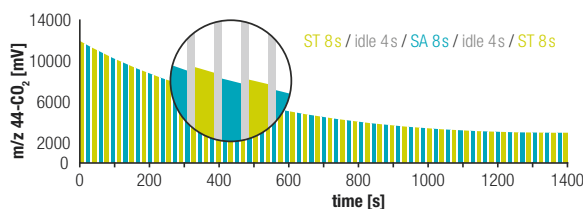
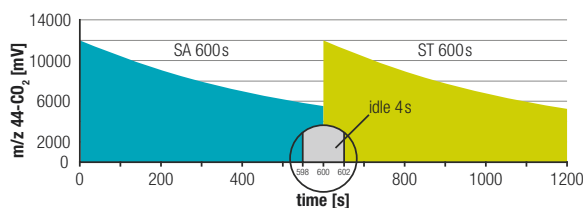
- Outstanding signal-to-noise ratio on small ion beams (e.g. *m/z* 47-48-49)
- Unmatched precision for the measurement of rare isotopologues
- Fast decay time on all amplifier gains

Stability

The new Long Integration Dual Inlet (LIDI) workflow merges the conventional dual inlet strategy, which has been based on short term sample/standard comparisons, with referencing techniques developed for Continuous Flow IRMS. LIDI improves the sample utilization up to a factor of three.

LIDI Workflow

The outstanding signal and system stability of the 253 Plus 10 kV IRMS utilizes a much bigger part of the sample gas by using the LIDI methodology. In LIDI, the sample gas is analyzed until its signal intensity has no significant contribution to the achievable precision anymore. Only after that, the changeover valve switches to the standard gas for acquisition with the benefit that high precision can be reached after much shorter analysis time. The traditional dual inlet strategy results in > 50% loss of the sample, incurred while analyzing the standard. Consequently LIDI provides analysis of much smaller samples with high precision for clumped isotope systems and analysis of very small carbonate samples.



Comparison of conventional Dual Inlet mode with LIDI

Dual Inlet System

The Thermo Scientific Dual Inlet System builds on monolithic all-metal valve blocks with gold-sealed and gold-seated valves for showing no detectable argon background nor analyte memory with ultra high vacuum conditions. It can be heated to achieve high purity sample introduction. The Dual Inlet System is integrated into the 253 Plus 10 kV IRMS cabinet and the changeover valve block is mounted directly to the ion source housing.

This proven design results in minimal dead volume, shortest transit distance and minimum gas path length. The waste line from the changeover is pumped by a dedicated turbo molecular pump. Adjustment of the variable bellows follows our "Fast Bellows" strategy for better sample utilization. The Dual Inlet System can be expanded by one or two multiports (10 ports each). A cryogenic micro volume inlet system can be added for maximum utilization of very small samples.

Isodat Software Suite

The Isodat Software Suite, the benchmark in gas isotope ratio data systems, enables the 253 Plus 10 kV IRMS to be easily set up, tuned, and operated fully automated. Auto-focusing of the ion source, storage of parameter sets and automatic use by any acquisition method makes operation of the 253 Plus 10 kV IRMS easy and reliable. The Isodat Software Suite supports routine operation as well as an open structure for user specific changes. The powerful Isodat Script Language (ISL) provides access to all processes and allows modification of supplied scripts as well as development of entirely new peripherals, measurements and evaluation protocols. A fully automated suite of diagnostic software documents the system performance.

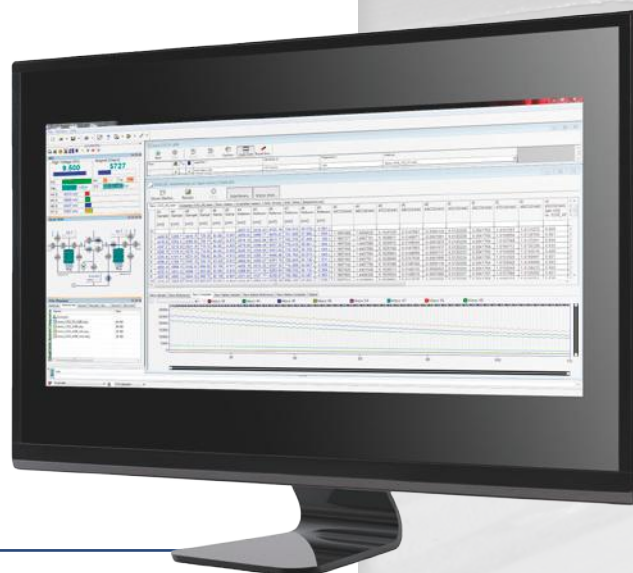
- Fully integrated workflow solutions
- Unique long integration dual inlet workflow (LIDI) for uncompromised sample utilization
- Fully automated suite of diagnostic software
- Remote control and diagnostics



LIDI Workflow Uncompromised Sample Utilization

The new long integration dual inlet (LIDI) workflow allows a long integration of the sample followed by an intensity-matched long integration of the standard. LIDI is fully integrated into the Isodat software suite.

- Threefold reduction in sample utilization
- Three times smaller sample sizes
- Ultimate precision in half the measurement time



Discover more with the leader in isotope analysis

For over 60 years Thermo Fisher Scientific has been the leading supplier of isotope ratio instrumentation to scientists throughout the world.

Our products have enabled some of the most exciting pioneering discoveries with isotopic measurement, many in geochemical applications. The 253 Plus 10 kV IRMS continues the journey by opening new routes into isotope ratio measurements.

All our products are built to exacting standards and supported globally by our international service network. Our goal is to support your success.



Delta Ray™ Connect
Isotope Ratio Infrared
Spectrometer



Delta V™
Isotope Ratio MS



253 Plus™ 10 kV Isotope
Ratio MS

Thermo Scientific Isotope Ratio Analyzers



ELEMENT 2/XR High
Resolution ICP-MS



Helix MC Plus™
Noble Gas MS



TRITON Plus™
Thermal Ionization MS



NEPTUNE Plus™ High
Resolution MC-ICP-MS



253 Ultra™ High Resolution
Isotope Ratio MS

www.thermoscientific.com/253Plus

©2016 Thermo Fisher Scientific Inc. All rights reserved. ISO is a trademark of the International Standards Organization. All other trademarks are the property of Thermo Fisher Scientific and its subsidiaries. This information is presented as an example of the capabilities of Thermo Fisher Scientific products. It is not intended to encourage use of these products in any manners that might infringe the intellectual property rights of others. Specifications, terms and pricing are subject to change. Not all products are available in all countries. Please consult your local sales representative for details.

Thermo Fisher Scientific
(Bremen) GmbH
Management System
Registered to
ISO 9001:2008

Africa +43 1 333 50 34 0
Australia +61 3 9757 4300
Austria +43 810 282 206
Belgium +32 53 73 42 41
Canada +1 800 530 8447
China 800 810 5118 (free call domestic)
400 650 5118

Denmark +45 70 23 62 60
Europe-Other +43 1 333 50 34 0
Finland +358 9 3291 0200
France +33 1 60 92 48 00
Germany +49 6103 408 1014
India +91 22 6742 9494
Italy +39 02 950 591

Japan +81 45 453 9100
Korea +82 2 3420 8600
Latin America +1 561 688 8700
Middle East +43 1 333 50 34 0
Netherlands +31 76 579 55 55
New Zealand +64 9 980 6700
Norway +46 8 556 468 00

Russia/CIS +43 1 333 50 34 0
Singapore +65 6289 1190
Spain +34 914 845 965
Sweden +46 8 556 468 00
Switzerland +41 61 716 77 0
UK +44 1442 233555
USA +1 800 532 4752

Thermo
SCIENTIFIC

A Thermo Fisher Scientific Brand